

EDAN



F6 Fetal & Maternal Monitor



F6 Fetal & Maternal Monitor



EDAN Edan Instruments, Inc.

- 3/F – B, Nanshan Medical Equipment Park, Nanshan Rd 1019#, Shekou, Nanshan Shenzhen, 518067 P.R. China
- Tel: +86-755-26898326 • Fax: +86-755-26898330 • www.edan.com.cn • Email: info@edan.com.cn
- All rights reserved. Features and specifications are subject to change without notice



ENG-OB & GYN-F6-V2.5-20130226

Care for Health

EDAN



< Foldable color TFT screen

F6 supports four viewing angles: 15°, 30°, 45°, 60° that give better optic angles for care givers.



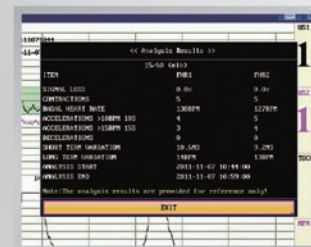
< Quick setup and simplified workflow

Functional keys and knob provide various short-cuts to achieve functions for clinical use. The 'START' button could be configured to integrate patient info and printing. This could help the doctor to simplify the workflow and work with 1 button only.



< Various printing options

F6 is compatible with 152 and 150 mm thermal printing paper in either American or International standard. The recording information includes patient info, FHR waveform, TOCO waveform, Fetal movement and so on.



< Built-in Antepartum CTG Analysis

The antepartum CTG analysis provides objective and numerical assessment of CTG for the caregivers' reference and ensures easy access to read FHR patterns.

F6

Fetal & Maternal Monitor

User-friendly design

- 10.1" foldable TFT color screen
- Compact and portable design
- Probe rack for easy positioning of the transducers

Easy to Read & Operate

- Numeric and waveform display of FHR and TOCO
- Simplified workflow with various short-cuts
- Easy to use menu system ensures fast access to important functions

Advanced FHR Detection Technology

- 1 MHz waterproof sensitive transducer
- Signals Overlap Verification to differentiate twins FHR
- FHR signal quality indicator helps optimize the probe position

Powerful Data Management

- 60 hours built-in memory for seamless monitoring
- MFM-CNS network for remote monitoring
- Insight software for data management

